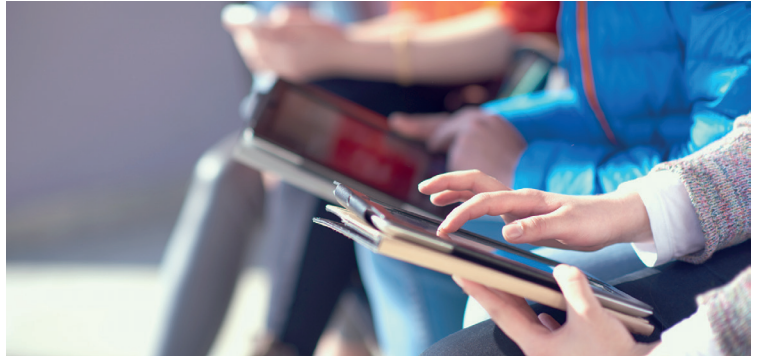




# ***CATALOGUE***

INTERNATIONAL  
PROGRAMMES  
19 / 20



**No. 1**

technical university in Lithuania (Reitingai, 2018); among 4 percent of top universities of the world according to QS World University Rankings 2017/2018

**~ 10,000**

students study BSc, MSc and PhD. 10 % of international students

**> 1,000**

qualified professors, visiting professors and experts from industry

**> 500**

agreements with business and public organisations worldwide: NATO, BASF, ELSIS TS, Samsung, Hitachi, TermoFisher Scientific, Bloomberg and others

**~ 500**

students participate in studies and internships exchange programmes

**~ 80**

start-up companies as of 2012

**> 40**

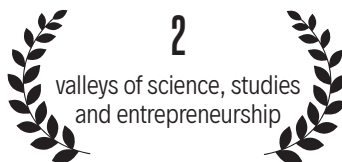
student organisations and art societies: astronomy, debates, design, fine arts, investment, journalism, marketing, science, scouts, video, music, dance, photography

**12**

sport centres in which students can join ~ 30 sports groups in order to be able to remain fit or to practice professionally in 8 university teams

**6**

types of mentors: peer, academic, career and research mentors, social buddy and tutor



**KTU Santaka Valley.** Science and business: from idea to product (€ 43 million investment)

The largest in Lithuania **Mobile Applications Laboratory:** Omnitel, App Camp, Samsung Electronic Baltics SIA

**Intermedix creative hub** (€ 100,000 investment)

**KTU Startup Space:** promotion of young business

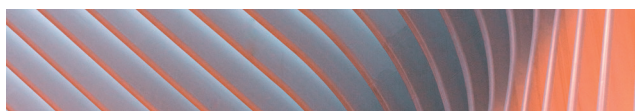
Unique in Northern Europe, **DesignLibrary Kaunas** unites design, technology and entrepreneurship

**KTU “Career Fair”:** the largest career fair in the Baltics

The largest and the only one in the Baltic States **Bloomberg Financial Markets Lab**

**6 Libraries** with around 600 work and 40 leisure time areas

**Virtual** studying environment



# BA

BACHELOR'S PROGRAMMES IN ENGLISH

## Preparatory courses

| course             | years    |
|--------------------|----------|
| Prep. English      | 1–2 sem. |
| Prep. Architecture | 1 sem.   |

## Architecture

|   |   |
|---|---|
| Architecture<br>(integrated studies; Master's degree) | 5 |
|---|---|

## Computer Science

|             |   |
|-------------|---|
| Informatics | 4 |
|-------------|---|

## Engineering Sciences

|  |   |
|--|---|
| Aviation Engineering                   | 4 |
| Chemical Technology and Engineering    | 4 |
| Civil Engineering                      | 4 |
| Electronics and Electrical Engineering | 3 |
| Mechanical Engineering                 | 4 |
| Mechatronics                           | 4 |
| Robotics                               | 4 |
| Vehicle Engineering                    | 4 |

## Social Sciences

|                             |   |
|-----------------------------|---|
| Policy and Security Studies | 3 |
| Public Governance           | 4 |

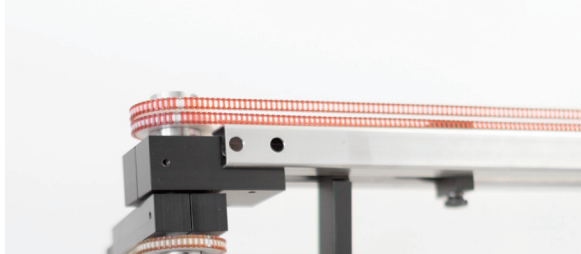
## Humanities

|                    |   |
|--------------------|---|
| New Media Language | 4 |
|--------------------|---|

## Technological and Physical Sciences (two field)

|  |   |
|--|---|
| Materials Physics and Nanotechnologies | 4 |
|--|---|





## DURING THE STUDIES

Get tuition waiver for outstanding results  
Take a chance to study 1–2 semesters abroad  
Learn German, French, Swedish, Spanish, Russian or Italian  
Lithuanian language and culture course  
Get academic and career planning training  
Catch up with missing knowledge via personal tutoring  
Choose internship in Lithuanian and foreign enterprises  
Be an active member of Erasmus Student Network KTU  
Play, sing and do sports with KTU societies  
Develop personal and professional competencies  
Get scholarship for advanced study results and research activities

## APPLY NOW ON

[apply.ktu.edu](http://apply.ktu.edu)

**High school certificate** (legalised by Ministry of Foreign Affairs, translated into English and notary verified)

**Maximum 3 years after high school graduation is eligible**

**Minimum average grade (CGPA) > 60 % in each entry subject** (depends on the programme, typically Mathematics, Physics, IT)

**Proficiency in English:** IELTS  $\geq 5.5$ , TOEFL  $\geq 75$ , CEFR  $\geq B2$ , or equivalent

**Digital photo**

**Notary verified copy of passport**

**For transfer students additionally:** original academic transcript of ongoing education at university and the description of taken courses.

## APPLICATION DEADLINES

☐ **30th of June**

☐ **30th of July**, if there is a **Lithuanian embassy** in your country of residence, or **no visa is required** to enter Lithuania

*Additional autumn intake for selected programmes  
from September to December*

[international@ktu.lt](mailto:international@ktu.lt)

**TO BE CONTINUED...**

# MA

MASTER'S PROGRAMMES IN ENGLISH

## Architecture

| course       | years |
|--------------|-------|
| Architecture | 2     |

## Business and Public Management

|                         |   |
|-------------------------|---|
| Accounting and Auditing | 2 |
| International Business  | 2 |

## Computer Science Engineering Sciences

|  |     |
|--|-----|
| Informatics                                  | 2   |
| Aeronautical Engineering                     | 2   |
| Biomedical Engineering                       | 2   |
| Chemical Engineering                         | 2   |
| Control Technologies                         | 2   |
| Electrical Power Engineering                 | 2   |
| Electronics Engineering                      | 2   |
| Environmental Engineering                    | 2   |
| Sustainable Management and Production        | 2   |
| Industrial Engineering and Management        | 2   |
| Mechanical Engineering                       | 2   |
| Mechatronics                                 | 2   |
| Structural and Building Products Engineering | 1,5 |
| Vehicle Engineering                          | 2   |

## Health Sciences

|                 |   |
|-----------------|---|
| Medical Physics | 2 |
|-----------------|---|

## Technological Sciences

|                         |   |
|-------------------------|---|
| Food Science and Safety | 2 |
| Materials Science       | 2 |

## Social Sciences

|                            |     |
|----------------------------|-----|
| Public Policy and Security | 1,5 |
|----------------------------|-----|

## Humanities

|   |   |
|---|---|
| Translation and Localization of Technical Texts | 2 |
|---|---|

## Physical Sciences

|                 |   |
|-----------------|---|
| Applied Physics | 2 |
|-----------------|---|



## DURING THE STUDIES

Get tuition waiver for outstanding results  
Participate in scientific conferences and research projects  
Expand managerial/interdisciplinary competencies via Master+ module  
Take a chance to study 1 semester abroad  
Get academic, research and career planning training  
Implement acquired knowledge via professional internships  
Take Lithuanian language and culture course  
Be an active member of Erasmus Student Network KTU  
Be involved in KTU social activities  
Develop personal and professional competencies  
Get scholarship for advanced study results and research activities

## APPLY NOW ON

[apply.ktu.edu](http://apply.ktu.edu)

**University Bachelor (a minimum of a 3 year) degree certificate and its supplement** (legalised by Ministry of Foreign Affairs, translated into English and notary verified)

**Minimum average grade (CGPA) > 60 %**

**Specific subject requirements**

**Research activities**, articles are not required but gives higher entry score

**Motivation letter**

**Proficiency in English:** IELTS  $\geq 6.0$ , TOEFL  $\geq 85$ , CEFR  $\geq C1$ , or equivalent

**Digital photo**

**Notary verified copy of passport**

## APPLICATION DEADLINES

- ☐ **30th of June**
- ☐ **30th of July**, if there is a **Lithuanian embassy** in your country of residence, or **no visa is required** to enter Lithuania  
*Additional autumn intake for selected programmes from September to December*

[international@ktu.lt](mailto:international@ktu.lt)

**TO BE CONTINUED...**





## FLY TO LITHUANIA

Globally **recognised** degree certificate

International student **campus**

Accommodation in **dormitories**. Meet & Greet

**Safe** environment and temperate natural conditions make for pleasant living

**Kaunas** is the second largest city in Lithuania, often called Lithuanian intelligentsia and cultural capital

Every 5<sup>th</sup> inhabitant in Kaunas **study** at university or college

Kaunas is among the top 10 most **cost-effective** cities in Europe (average cost of living is ~€ 400–450)

Lithuania is a member state of the **European Union**, the World Trade Organisation, The United Nations, OSCE and NATO

92 percent of Lithuanians speak at least one **foreign language**: English, Russian or German

Lithuania is fifth in the world, third in Europe and **first among the Baltic** States in foreign investment projects

A **short flight** (2 to 3 hours) from any European country

## CONTACTS

[international@ktu.lt](mailto:international@ktu.lt)

[admissions.ktu.edu](mailto:admissions.ktu.edu)

Facebook: [KTU.International.Students](https://www.facebook.com/KTU.International.Students)

[ktu.edu](http://ktu.edu)

